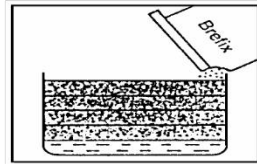


ROCK FIX 1

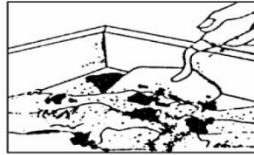
Pre-packed Cementitious Tile Adhesive

Product Description	Rock Fix 1 is a single component, pre-packed tiling adhesive mortar combining cement with selected grades of silica sand and several admixtures. Only requires addition of water.						
Advantages	<table border="0"> <tr> <td> Rock Fix 1 <ul style="list-style-type: none"> ■ Factory mixed - consistent quality. ■ Better coverage 7 to 9 /m² per 25 kg (based on 2-3 mm mortar thickness). </td> <td> Conventional Mortar <ul style="list-style-type: none"> ■ On site mixing - inconsistent quality. ■ Coverage of 4 - 5 m² per 25 kg. </td> </tr> <tr> <td colspan="2"> Note: Actual coverage will vary depending on tile size and substrate. </td> </tr> <tr> <td> <ul style="list-style-type: none"> ■ Better workability. Saves 25 - 50 % of time. ■ Tiles need not be pre-soaked in water. ■ Tiles can be adjusted up to 30 minutes after application. ■ Good bond adhesion 1.5 N/mm². ■ Slower setting time. Initial - 6 hours. Final - 7 hours. </td> <td> <ul style="list-style-type: none"> ■ Poor Workability ■ Tiles have to be pre-soaked in water ■ Difficulty in adjusting tiles ■ Satisfactory shear adhesion: ~ 1.1 N/mm². ■ Faster setting time. Initial - 2.5 hours. Final - 3.7 hours. </td> </tr> </table> <p>On overall comparison, Rock Fix 1 pre-packed cementitious tiling adhesive is more economical than conventional mortar by as much as 10 - 20 %.</p>	Rock Fix 1 <ul style="list-style-type: none"> ■ Factory mixed - consistent quality. ■ Better coverage 7 to 9 /m² per 25 kg (based on 2-3 mm mortar thickness). 	Conventional Mortar <ul style="list-style-type: none"> ■ On site mixing - inconsistent quality. ■ Coverage of 4 - 5 m² per 25 kg. 	Note: Actual coverage will vary depending on tile size and substrate.		<ul style="list-style-type: none"> ■ Better workability. Saves 25 - 50 % of time. ■ Tiles need not be pre-soaked in water. ■ Tiles can be adjusted up to 30 minutes after application. ■ Good bond adhesion 1.5 N/mm². ■ Slower setting time. Initial - 6 hours. Final - 7 hours. 	<ul style="list-style-type: none"> ■ Poor Workability ■ Tiles have to be pre-soaked in water ■ Difficulty in adjusting tiles ■ Satisfactory shear adhesion: ~ 1.1 N/mm². ■ Faster setting time. Initial - 2.5 hours. Final - 3.7 hours.
Rock Fix 1 <ul style="list-style-type: none"> ■ Factory mixed - consistent quality. ■ Better coverage 7 to 9 /m² per 25 kg (based on 2-3 mm mortar thickness). 	Conventional Mortar <ul style="list-style-type: none"> ■ On site mixing - inconsistent quality. ■ Coverage of 4 - 5 m² per 25 kg. 						
Note: Actual coverage will vary depending on tile size and substrate.							
<ul style="list-style-type: none"> ■ Better workability. Saves 25 - 50 % of time. ■ Tiles need not be pre-soaked in water. ■ Tiles can be adjusted up to 30 minutes after application. ■ Good bond adhesion 1.5 N/mm². ■ Slower setting time. Initial - 6 hours. Final - 7 hours. 	<ul style="list-style-type: none"> ■ Poor Workability ■ Tiles have to be pre-soaked in water ■ Difficulty in adjusting tiles ■ Satisfactory shear adhesion: ~ 1.1 N/mm². ■ Faster setting time. Initial - 2.5 hours. Final - 3.7 hours. 						
Product Data							
Form	Powder.						
Colour	Grey / White.						
Packaging	25 kg bags.						
Storage Condition	Store in a dry cool place.						
Shelf Life	12 months from date of production if stored properly in original unopened packing.						
Technical Data							
Density (Fresh Mortar)	Approx. 2.0 kg/litre.						
PH of Mix	Approx. 10 ± 1.						
Consistency of Mix	Thin mortar adhesive.						
Adjustability Time	Approx. 30 minutes.						
Damp Resistance	Excellent.						
Solvent & Oil Resistance	Good.						
Acids & Alkalis Resistance	Poor.						
Temperature Resistance	Up to 90°C						
Bonding Strength	Approx. 1.5 N/mm ² (after 28 days).						
Compressive Strength	Approx. 17.0 N/mm ² (after 28 days).						
Flexural Strength	Approx. 5 N/mm ² (after 28 days).						
Application							
Consumption	7 - 9 m ² per 25 kg bag (base on 2-3 mm mortar thickness).						
Preparation of Substrate	Concrete surface must be clean, sound, level and uncontaminated by oil or grease. Remove cement laitance, formwork traces and loosely adhering particles by sand blasting or high pressure water jetting. Absorbent substrates must be prewetted to saturated surface dry (SSD) conditions.						
Application Temperature Range	From 8°C to 40°C.						

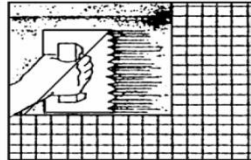
Application



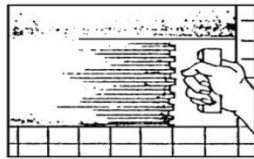
1- Use 5 – 5.5 litres water to 25 kg powder



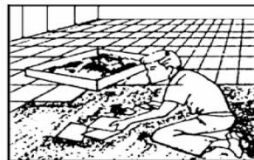
2- Mix well with a slow speed drill (max. 500 rpm) until homogeneous & free lumps achieved. Do not mix more material than can be used within open time. Do not add extra water after mix.



3- Apply with 'V' notched trowels for small tiles.



4- Apply with square notched trowels for bigger tiles.



5- Fix Tiles

Pot Life (at 25°C) Approx. 40 minutes.

Open Time (at 25 °C 60 % RH) Approx. 30 minutes.

Waiting Time Before Grouting For wall - after 7 to 8 hours (depending on temperature).
For floor - after 24 hours.

Open to Full Traffic After 14 days.

Safety Instructions

Ecology Do not dispose of into water or soil but according to local regulations.

Transport Non-hazardous.

Safety Precautions Wear gloves and goggles, In contact with eyes or skin product may cause irritation.

Toxicity Non-Toxic under relevant health and safety codes.



Al-Obour Buildings - Salah Salem Road - Nasr City - Cairo - Egypt.
10th Of Ramadan City.



info@CityChem.net



[@City_Chem](https://twitter.com/City_Chem)



[City Chem](https://www.facebook.com/CityChem)



+202 240 456 35



+2010 277 810 11



+2010 672 213 44

The Information Herein is Based on Our Present Knowledge and Experiences. This Information Merely Describes the Properties of Our Products but No Guarantee In the legal Sense Shall Be Implied. We Recommend Testing Our Products As To Their Suitability For Your Envisaged Purpose Prior To Use. No Warranties Of Any Kind, Either Express or Implied Including Warranties of Merchantability or Fitness For a Particular Purpose Are Made Regarding Any Products Mentioned Herein and Data or Information That Such Products, Data or Information May Be Used Without Infringing Intellectual Property Rights of Third Parties. We Reserve The Right To Make Any Changes According To Technological Progress or Further Developments. This Copy Replaces All Previous Versions - Printed in Egypt - 2020.



CONSTRUCTION